

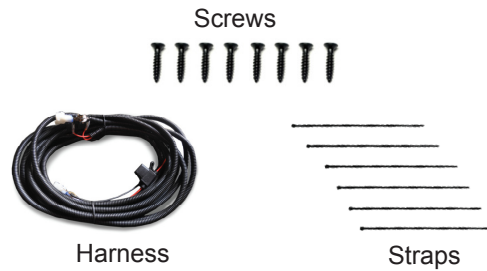
02-077



**LIGHT KIT**  
**WILL FIT E-Z-GO® FREEDOM TXT®**  
**INSTALLATION INSTRUCTIONS**

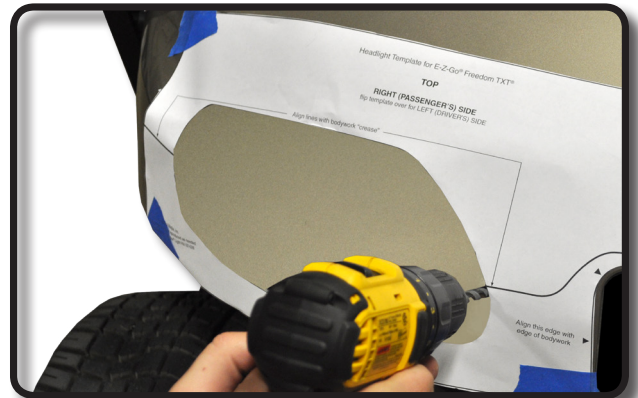
**INCLUDED:**

- 2 Headlights
- 2 Taillights
- 1 Wiring Harness
- 8 Screws
- Straps



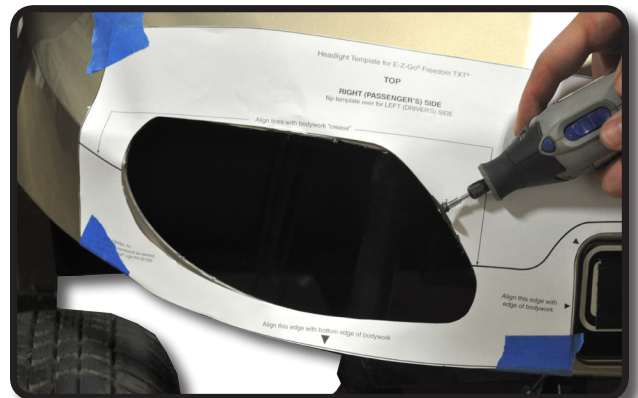
1

Place template on front of the cart. Be sure to use alignment references for proper placement. Tape along the ridges in the cowl. Mark along the inside with a marking pen. Drill pilot hole on the inside of the template line.



2

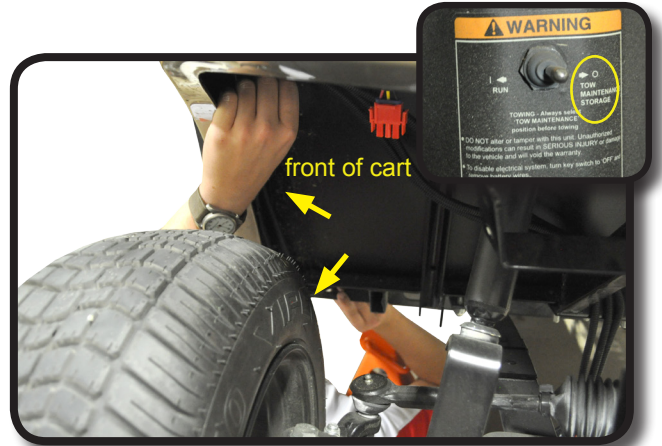
Cut out the shape of the headlight. Use the cutting tool to remove the excess trim. \*Flip template over repeat process on the other side.



3  
Use sandpaper to smooth out any rough edges. Mount headlight through the cutout. Push top half in first as shown.



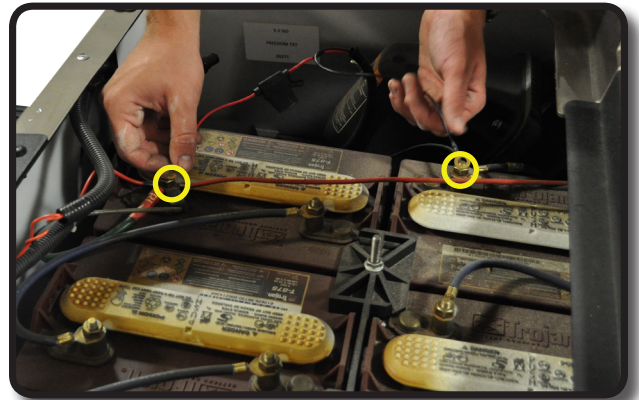
4  
\*Make sure cart is in TOW mode. Lift front of the cart and place jack stands to support. Feed front harness down through the front of the battery compartment. Run long tail light wire under the seat and over the tire well on the passenger's side. Run short tail light wire under the seat and over the tire well on the driver's side



*Red plugs should be aligned to passenger side, white plugs for driver's side.*

5  
**CAUTION: THIS LIGHT KIT IS A 12V SYSTEM. SUPPLYING MORE THAN 12V TO THE SYSTEM WILL DAMAGE THE LIGHT KIT AND VOID YOUR WARRANTY. DO NOT OVERLOAD.**

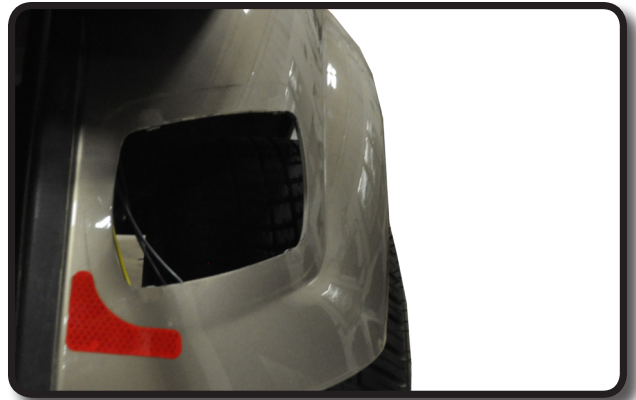
Choose 2 batteries side by side that are connected in series. Using a multimeter- probe ground to negative of one battery and probe positive from multi meter to positive of 2nd battery to check for 16 volts. We recommend using a voltage reducer to supply 12 volts to the light kit. This is where you will attach the positive & negative terminals from light kit.



6  
Align Tail Light template to the body contour as shown. Be sure to use alignment references for proper placement. Use a marking pen to trace the inside line. \*Flip template over to use on other side.



Next drill a pilot hole so you will have a starting point and then begin cutting. \*Use sandpaper to smooth edge.



Feed the tail light harness through the back of the cart. Attach rear tail light wire harness as shown. Secure wire with ties.



Place tail light into the rear of the vehicle. Insert four self tapping screws into tail light using supplied hardware.\*Repeat process on other side.



Remove the Push/Pull switch from harness. Run the wire harness through the holes under the frame to secure the harness.\*Use the zip ties provided.



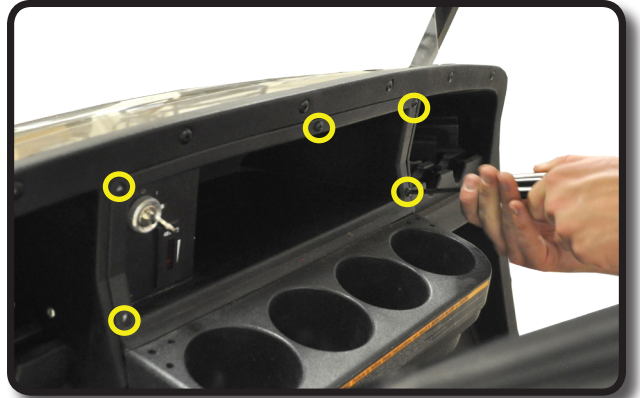
# 11

Attach headlight to wire harness as shown.  
Secure excess wire with zip ties.



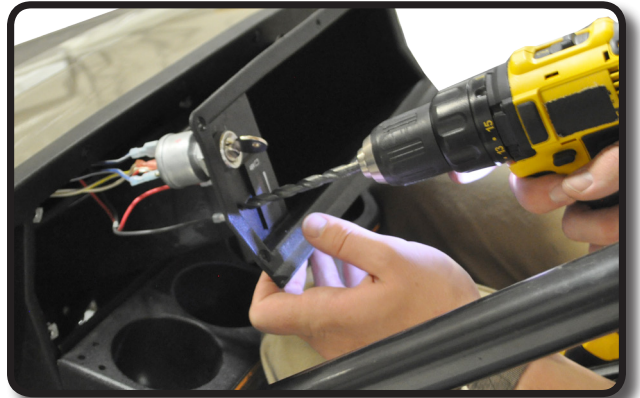
# 12

Using a phillips head screw driver, remove the 5 screws on the dashboard and retain hardware.



# 13

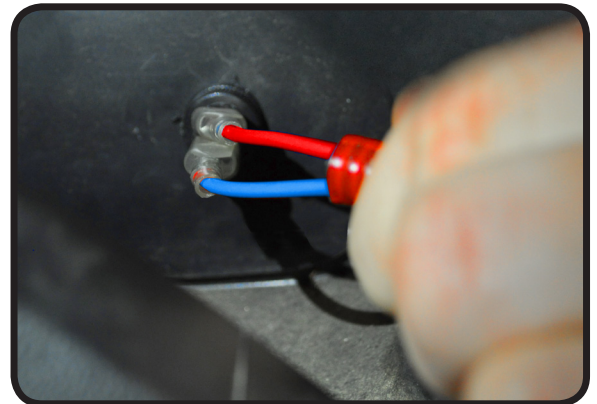
Using a 15/32" drill bit, drill out the hole for the rocker switch.\*Drill gently. Remove nut from rocker switch, feed switch through the drilled hole and tighten with nut.



# 14

Supply - 12v(+) constant (red)  
Load - 12v(+) switched (blue)

Using retained hardware from Step 12,  
reattach dashboard.



## INSTALLATION COMPLETE

**We recommend professional installation. If you choose to not have this product installed by a professional, we highly recommend that you exercise caution, care, and patience when installing this product as it involves drilling holes into your cart's body.**

E-Z-GO®, E-Z-Go® TXT®, and E-Z-Go® RXV® are registered trademarks of Textron Innovations, Inc. Club Car®, Club Car® Precedent®, and Club Car® DS® are registered trademarks of Ingersoll Rand, Inc. Yamaha®, Yamaha® Drive®, G-14®, G-16®, G-19®, and G-22® are registered trademarks of Yamaha Golf-Car Company. Any reference to Club Car®, E-Z-Go®, or Yamaha® or their associated trademarks, word marks, and products are only for purposes of identifying golf carts with which this GTW product is compatible. GTW products are aftermarket parts and are not original equipment parts. GTW is not connected to, affiliated with, sponsored by, or endorsed by either Textron Innovations, Inc., Ingersoll Rand, Inc., Yamaha Golf Cart Company, or any of their parent or subsidiary companies.

